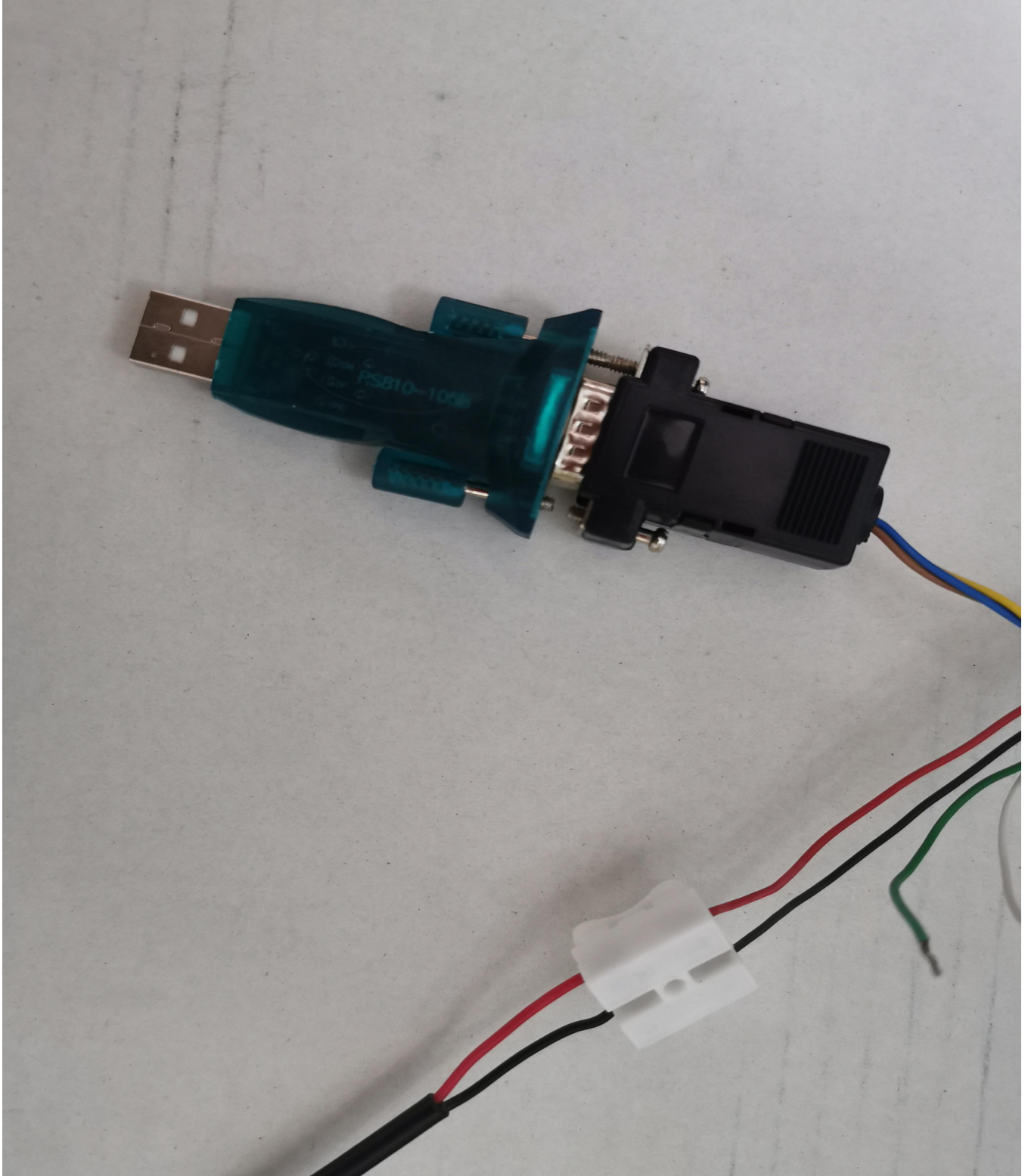
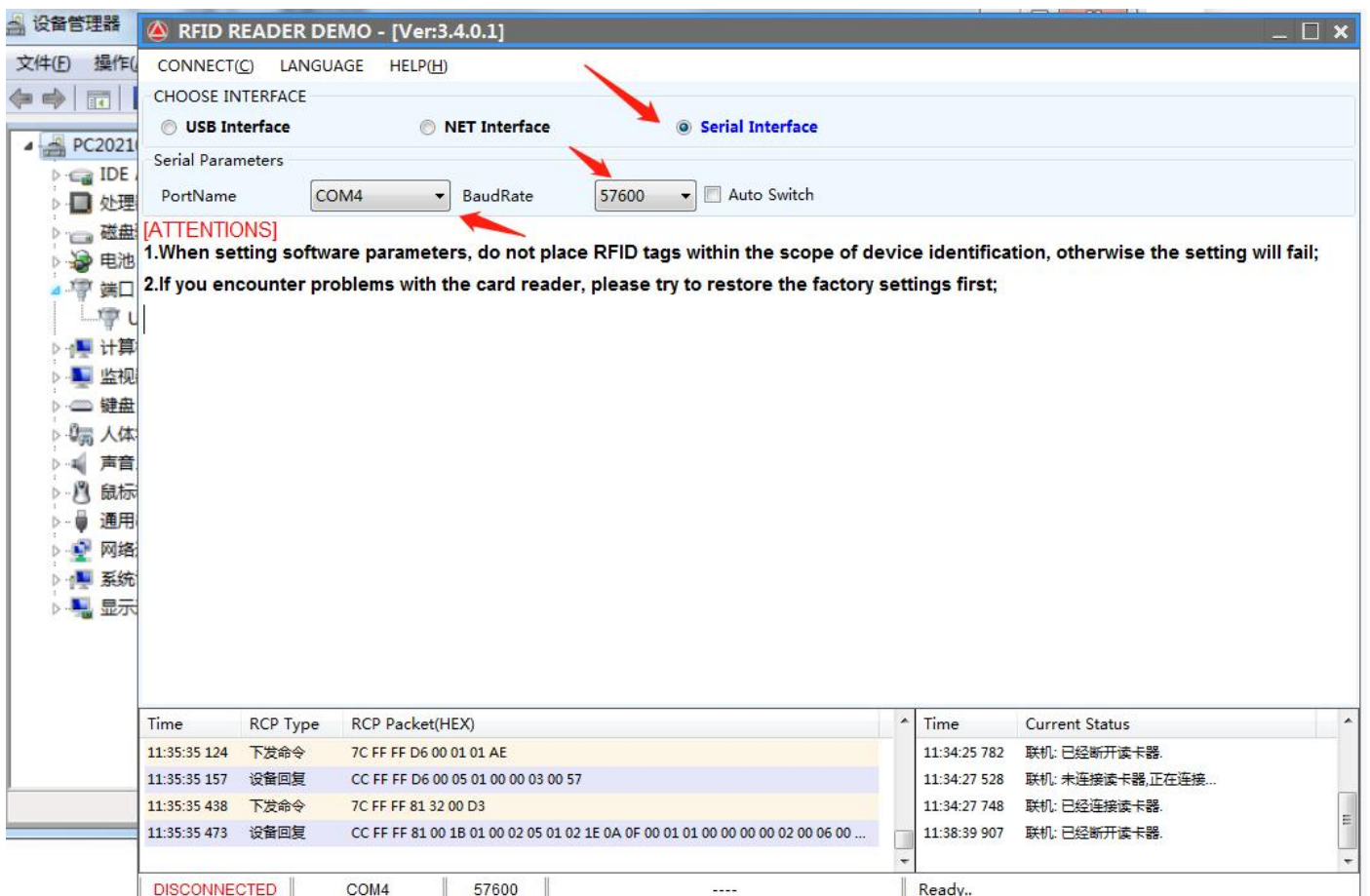
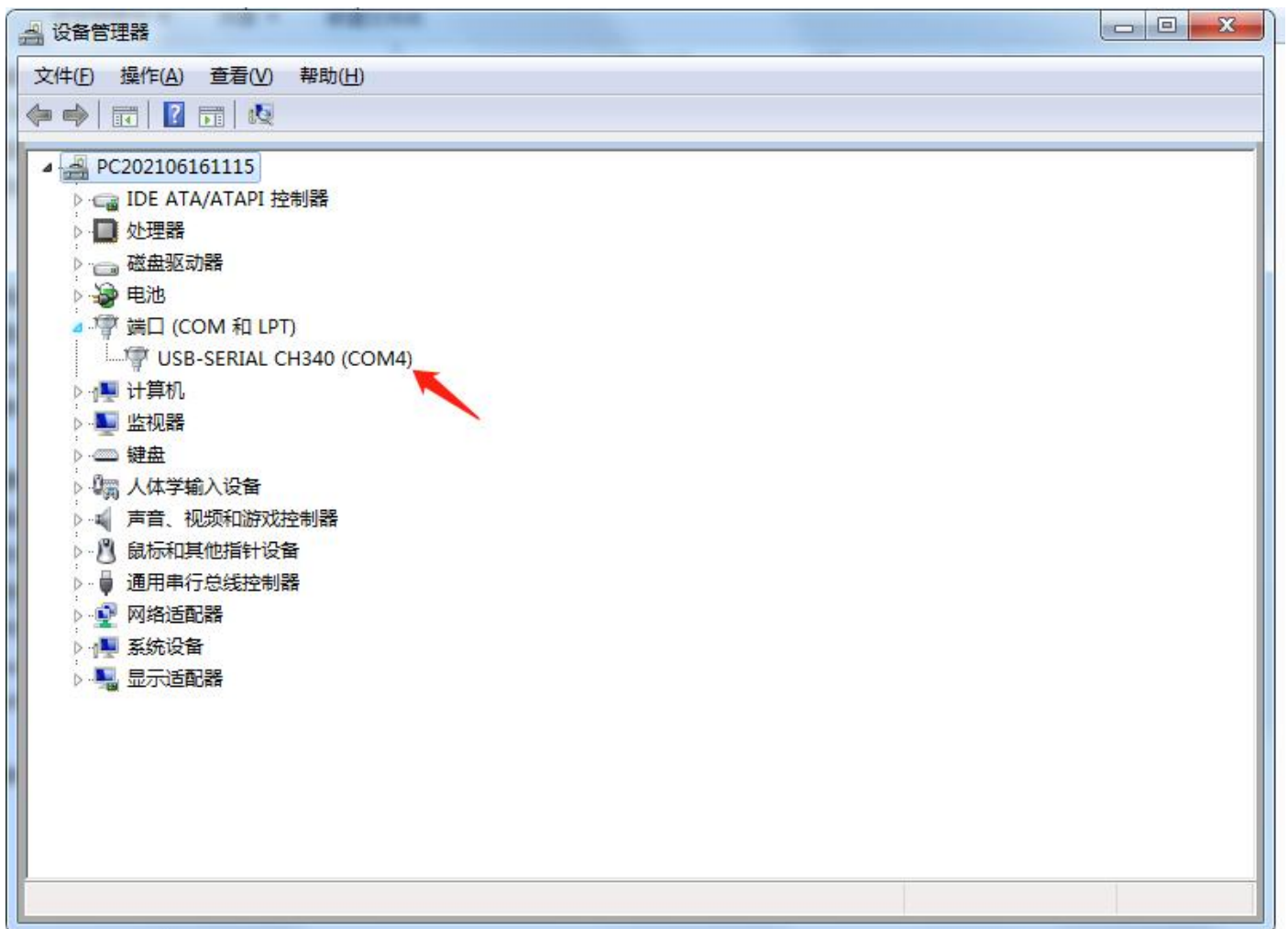


YANZEO

SR681 SR682 SR691 SR791 SR792 SI801 802 User Manual

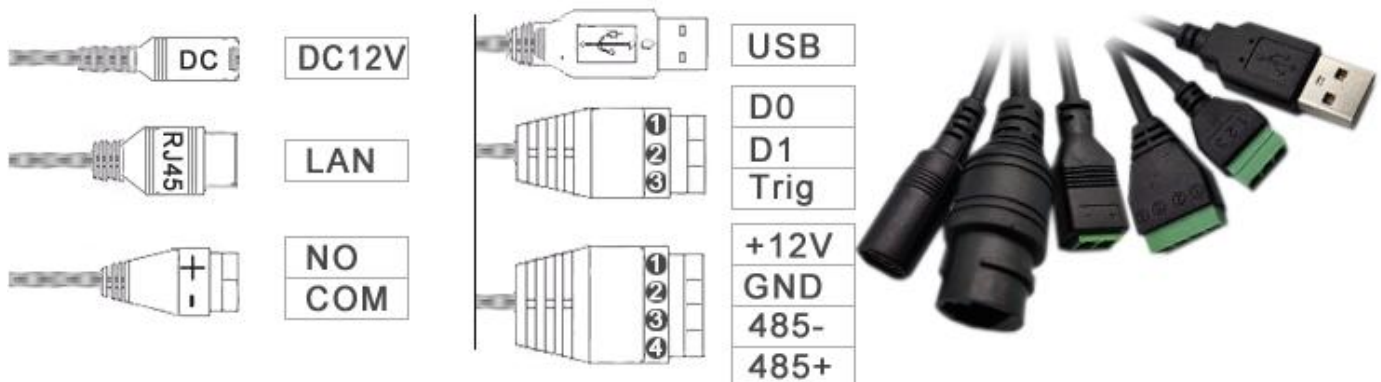
1:CH340 COM Port to USB, 2:Red or Black Cable to Power Adapter.





wiring diagram

Standard configuration interfaces include **USB/RS485/WG26/TCP/IP/RELAY**



RFID READER DEMO - [Ver:3.4.0.1]

CONNECT(C) LANGUAGE HELP(H)

CHOOSE INTERFACE

☒ **USB Interface** ☐ NET Interface ☐ Serial Interface

USB Parameters

USB Device: HID_3000-01 Refresh(F5)

[ATTENTIONS]

1. When setting software parameters, do not place RFID tags within the scope of device identification, otherwise the setting will fail;

2. If you encounter problems with the card reader, please try to restore the factory settings first;

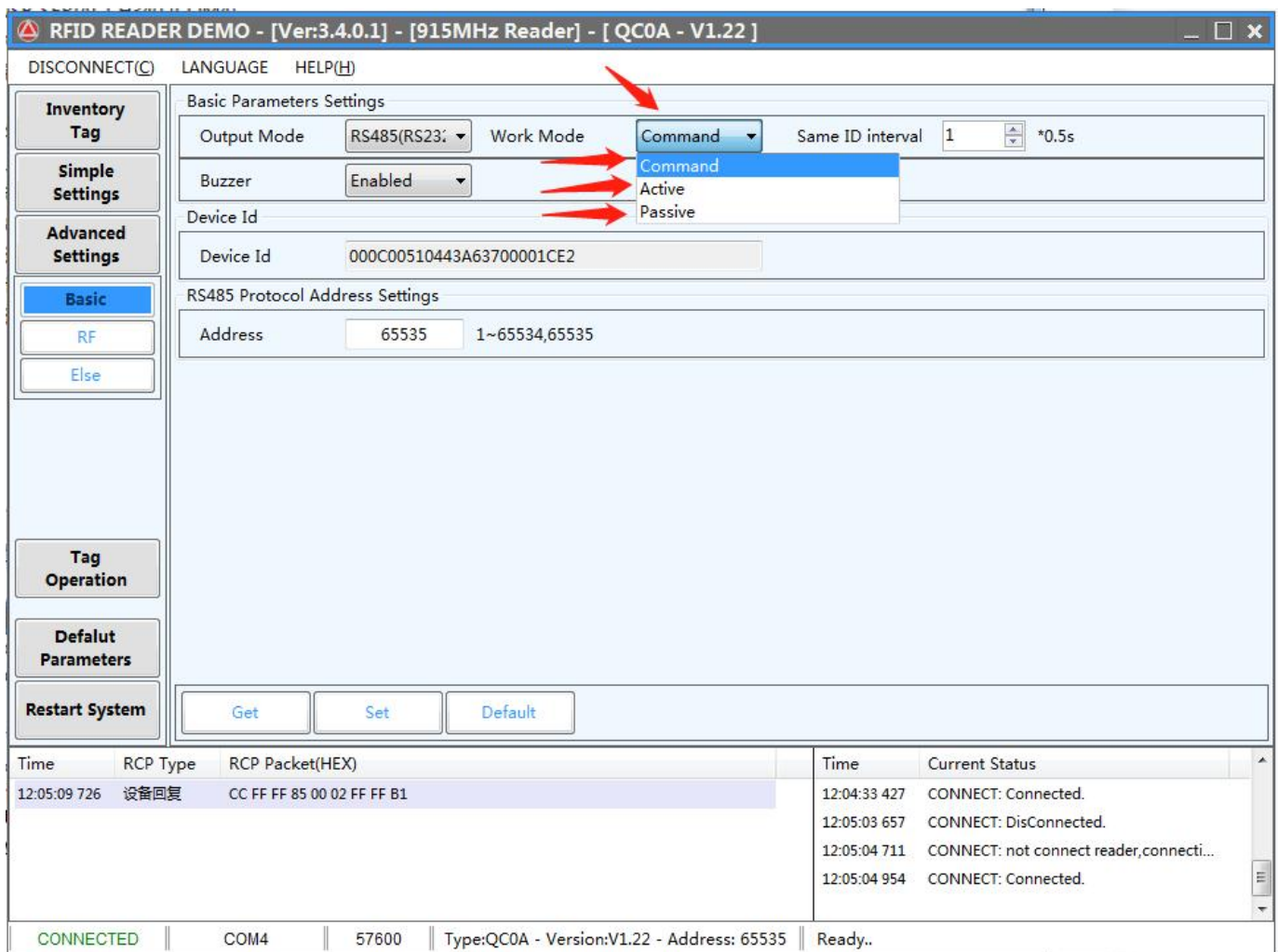
With USB cable, please use USB Device.

Time	RCP Type	RCP Packet(HEX)	Time	Current Status
			17:22:43 745	发现USB设备!

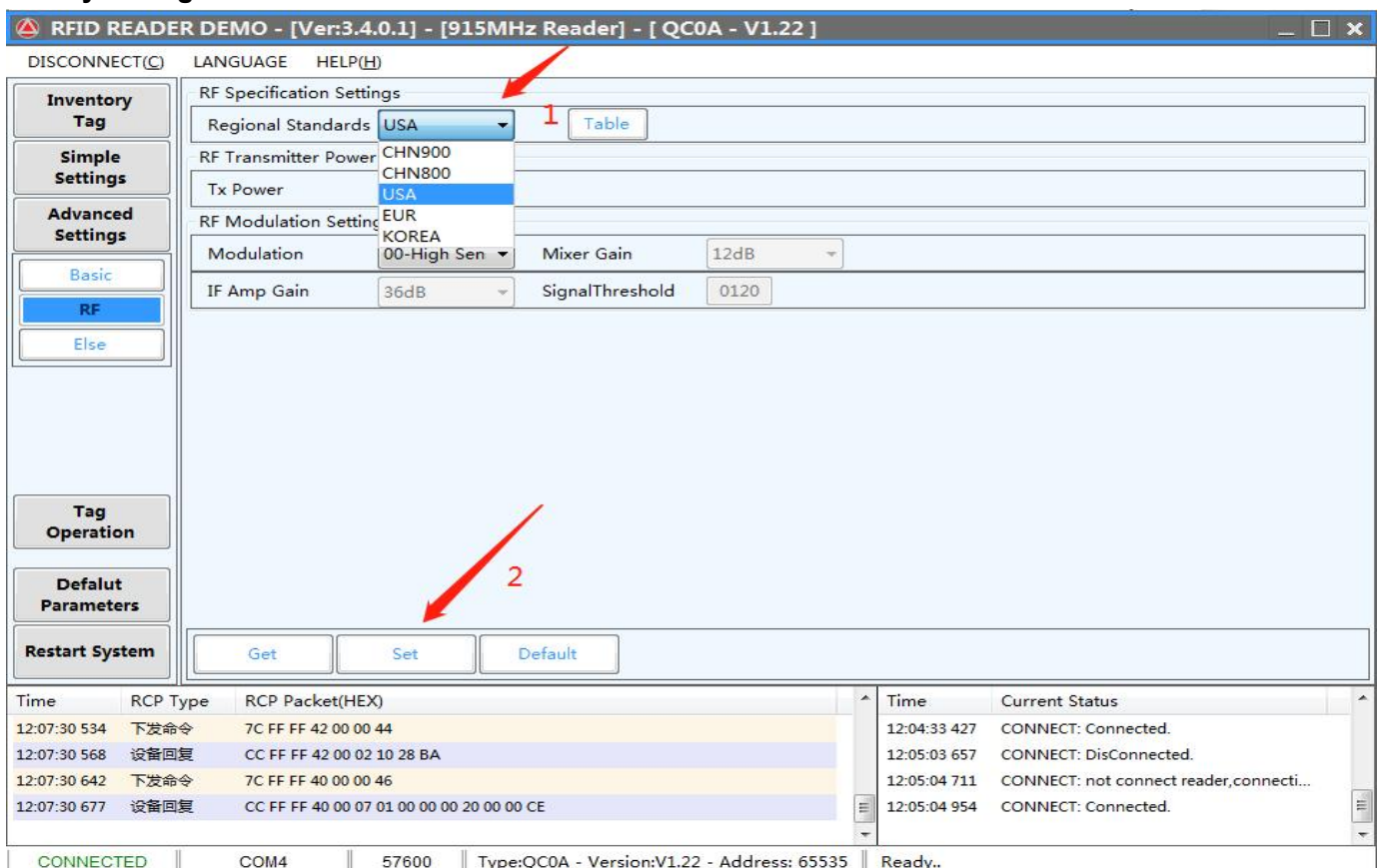
DISCONNECTED || USB || 0 || ---- || Status..

3: Set the working mode of the reader according to your needs.

If you need to write a card, please set the reader to passive mode.



4:Set your regional standard



5:Set the baud rate you require.

RFID READER DEMO - [Ver:3.4.0.1] - [915MHz Reader] - [QC0A - V1.22]

DISCONNECT(C) LANGUAGE HELP(H)

Inventory Tag
Simple Settings
Advanced Settings
Basic
RF
Else

Tag Operation
Default Parameters
Restart System

Data Output Format Settings GPIO Settings Encryption Settings Extended functions

Major BR: 57600 (selected), NONE, 115200, 57600, 38400, 9600, 19200. Buttons: Get, Set, Default. Note: USB version prohibits modification.

Time RCP Type RCP Packet(HEX)

12:10:03 259	下发命令	7C FF FF BD 32 00 97
12:10:03 288	设备回复	CC FF FF BD 01 01 0E 69
12:10:03 355	下发命令	7C FF FF BE 32 00 96
12:10:03 388	设备回复	CC FF FF BE 01 01 0E 68

Time Current Status

12:04:33 427	CONNECT: Connected.
12:05:03 657	CONNECT: DisConnected.
12:05:04 711	CONNECT: not connect reader,connecti...
12:05:04 954	CONNECT: Connected.

CONNECTED COM4 57600 Type:QC0A - Version:V1.22 - Address: 65535 Ready..

6:Write RFID Tag

RFID READER DEMO - [Ver:3.4.0.1] - [915MHz Reader] - [QC0A - V1.22]

DISCONNECT(C) LANGUAGE HELP(H)

Inventory Tag
Simple Settings
Advanced Settings
Tag Operation
Simple Write
Advanced
Copy TID
Import Write
Custom Write
Default Parameters
Restart System

Single Read Tag (selected) Choice Item: E200001D2111016715308ECB Select Unselect

PC	EPC	Data	Count	ANT	RSSI
1 3000	E200001D2111016721008FB7	E200001D2111016721008FB7	1	1	null

READ/WRITE LOCK KILL CUSTOM

Access Pwd(Hex): 00000000 Target Memory: 01-EPC

Start Address(Word Ptr): 2 Length(Word Count): 6

Data: HEX E200001D2111016721008FB7

Read tag memory (selected)
Write data to tag

Read Succeed!

Time RCP Type RCP Packet(HEX)

12:16:46 638	设备回复	CC FF FF 20 02 10 00 30 00 E2 00 00 19 38 11 01 90 18 80 A3 FB BC 0D
12:16:46 649	设备回复	CC FF FF 20 00 02 00 04 10
12:16:59 881	RCP CMD	7C FF FF 21 00 07 00 00 00 00 01 02 06 55
12:16:59 976	RCP RSP	CC FF FF 21 00 1B 00 30 00 E2 00 00 1D 21 11 01 67 21 00 8F B7 E2 00 00 1D 21 ...

Time Current Status

12:04:33 427	CONNECT: Connected.
12:05:03 657	CONNECT: DisConnected.
12:05:04 711	CONNECT: not connect reader,connecti...
12:05:04 954	CONNECT: Connected.

CONNECTED COM4 57600 Type:QC0A - Version:V1.22 - Address: 65535 Ready..

RFID READER DEMO - [Ver:3.4.0.1] - [915MHz Reader] - [QC0A - V1.22]

DISCONNECT(C) LANGUAGE HELP(H)

Inventory Tag

Simple Settings

Advanced Settings

Tag Operation

Simple Write

Advanced

Copy TID

Import Write

Custom Write

Default Parameters

Restart System

Single Read Tag

Choice Item: E200001D2111016721008FB7

Select Unselect

PC	EPC	Data	Count	ANT	RSSI	
1	3000	E200001D2111016721008FB7	/	1	1	null

READ/WRITE LOCK KILL CUSTOM

Access Pwd(Hex) 00000000 Target Memory 01-EPC

Start Address(Word Ptr) 2 Length(Word Count) 2

Data HEX 88992211

Read tag memory

Write data to tag

操作成功!

Time	RCP Type	RCP Packet(HEX)
12:21:57 652	下发命令	7C FF FF 22 00 0A 00 00 00 01 02 01 88 99 22 13
12:21:57 691	设备回复	CC FF FF 22 01 01 0E 04
12:22:02 026	下发命令	7C FF FF 22 00 0B 00 00 00 01 02 02 88 99 22 11 00
12:22:02 127	设备回复	CC FF FF 22 00 0F 00 30 00 E2 00 00 1D 21 11 01 67 21 00 8F B7 D5

Time	Current Status
12:04:33 427	CONNECT: Connected.
12:05:03 657	CONNECT: DisConnected.
12:05:04 711	CONNECT: not connect reader,connecti...
12:05:04 954	CONNECT: Connected.

CONNECTED COM4 57600 Type:QC0A - Version:V1.22 - Address: 65535 Ready..

RFID READER DEMO - [Ver:3.4.0.1] - [915MHz Reader] - [QC0A - V1.22]

DISCONNECT(C) LANGUAGE HELP(H)

Inventory Tag

Simple Settings

Advanced Settings

Tag Operation

Simple Write

Advanced

Copy TID

Import Write

Custom Write

Default Parameters

Restart System

Single Read Tag

Choice Item: 889922112111016721008FB7

Select Unselect

PC	EPC	Data	Count	ANT	RSSI	
1	3000	E200001D2111016715308ECB	/	1	1	-41dBm
2	3000	889922112111016721008FB7	/	1	1	-41dBm
3	3000	E2000019381101901880A3FB	/	1	1	-51dBm
4	3000	E200001908140060220034E2	/	1	1	-49dBm

Writing tag EPC succeeded.

READ/WRITE LOCK KILL CUSTOM

Access Pwd(Hex) 00000000 Target Memory 01-EPC

Start Address(Word Ptr) 2 Length(Word Count) 2

Data HEX 88992211

Read tag memory

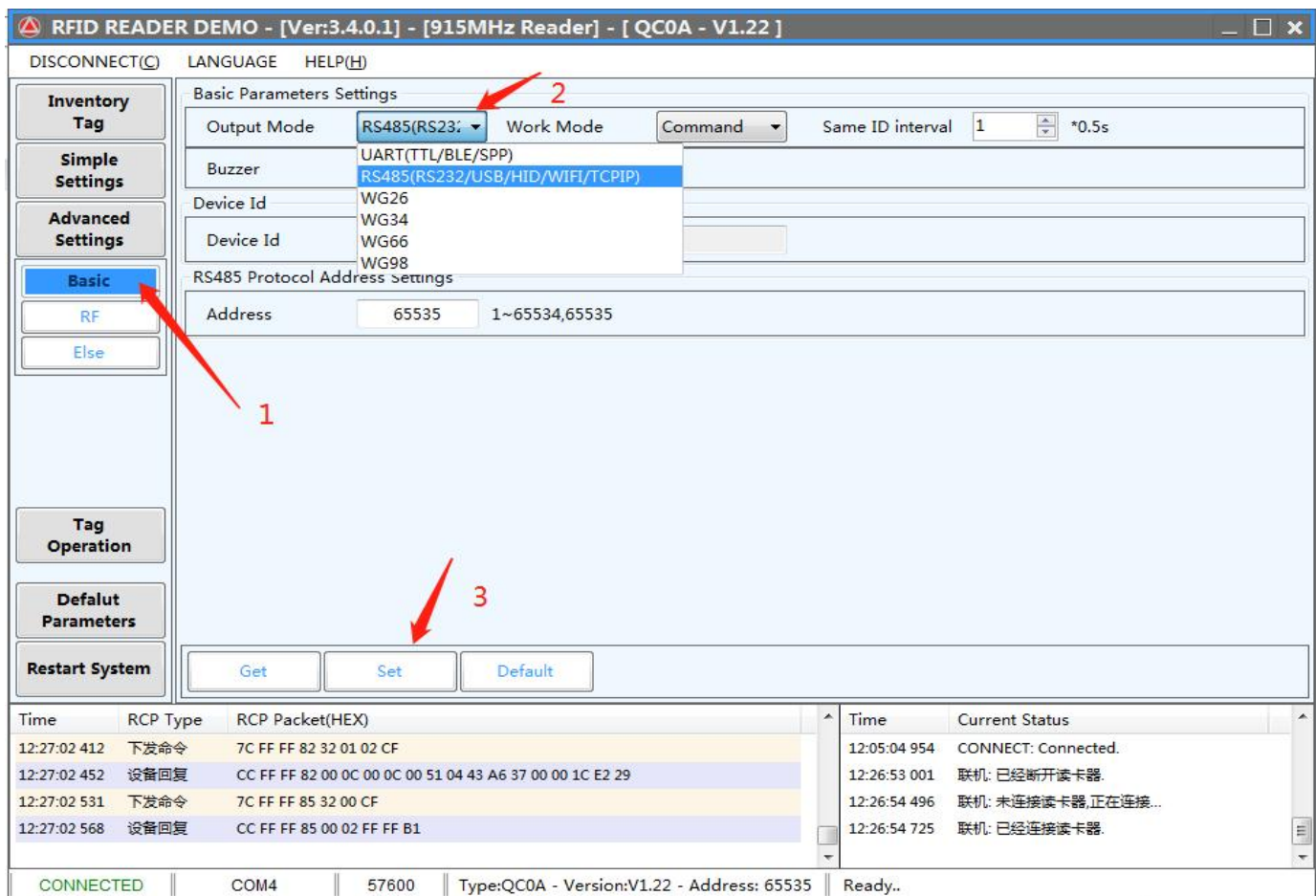
Write data to tag

Time	RCP Type	RCP Packet(HEX)
12:22:43 804	RCP RSP	CC FF FF 20 02 10 00 30 00 88 99 22 11 21 11 01 67 21 00 8F B7 C6 B9
12:22:43 818	RCP RSP	CC FF FF 20 02 10 00 30 00 E2 00 00 19 38 11 01 90 18 80 A3 FB BC 0D
12:22:43 831	RCP RSP	CC FF FF 20 02 10 00 30 00 E2 00 00 19 08 14 00 60 22 00 34 E2 BE 67
12:22:43 836	RCP RSP	CC FF FF 20 00 02 00 04 10

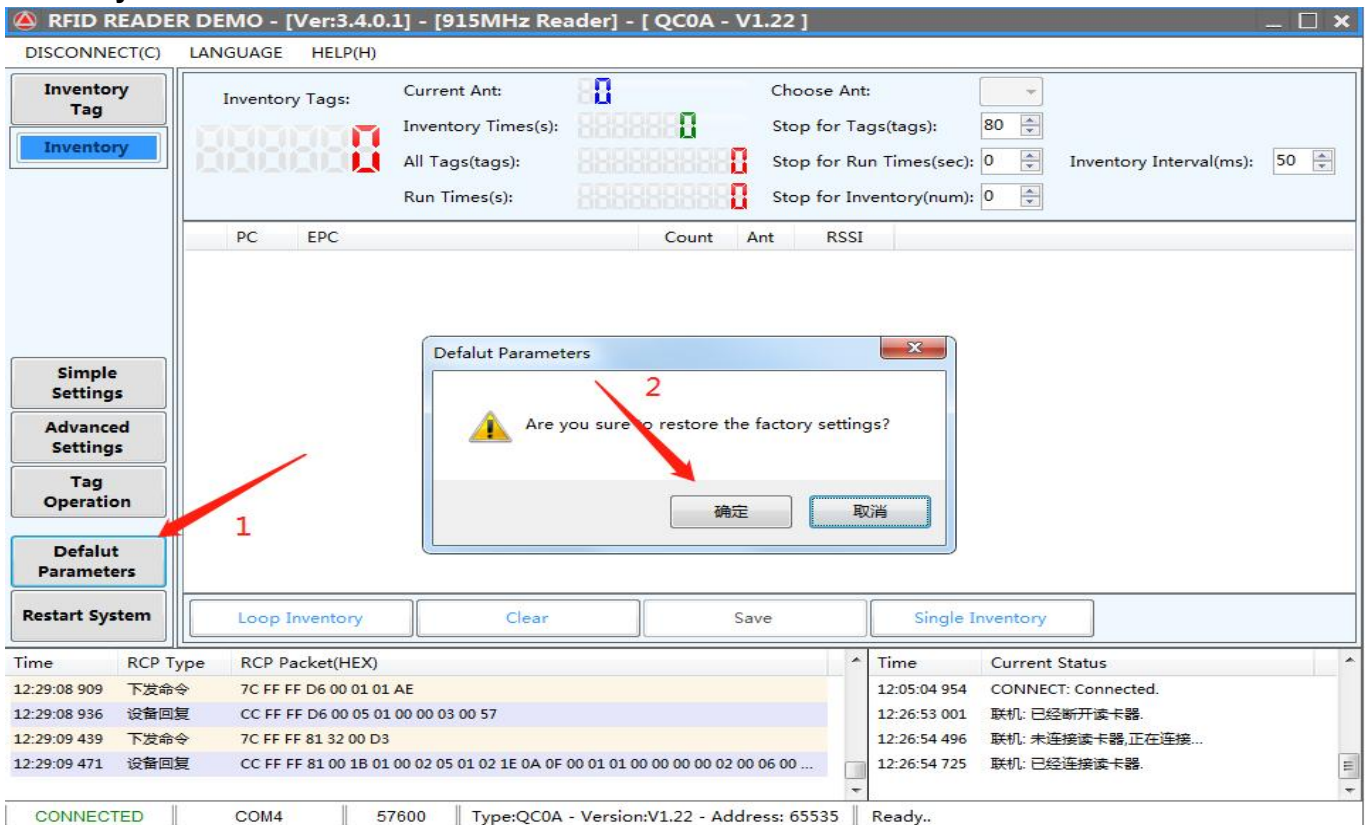
Time	Current Status
12:04:33 427	CONNECT: Connected.
12:05:03 657	CONNECT: DisConnected.
12:05:04 711	CONNECT: not connect reader,connecti...
12:05:04 954	CONNECT: Connected.

CONNECTED COM4 57600 Type:QC0A - Version:V1.22 - Address: 65535 Ready..

7:Configure output and communication modes.



8:Factory Reset



If you have any questions, please contact us.

Technical Support Skype: shiminhe Wechat or QQ: 839872638 www.yanzeo.com