

# Yanzeo AR980 **User manual**



## content

A.	Overview.....	3
B.	<b>Performance parameters.....</b>	<b>4</b>
C.	<b>Function introduction and operation instructions.....</b>	<b>5</b>
1.	Description of the boot display interface.....	5
2.	Basic operation.....	6
◆	Power on.....	6
◆	Scan the label.....	6
3.	System settings.....	6
1:	Return to the scanning interface.....	7
2:	Language setting.....	7
3:	storage settings.....	8
4:	Reread settings.....	8
5:	Data marking.....	8
6:	Data comparison.....	9
7:	Buzzer settings.....	9
8:	Delete card reading data.....	9
9:	version number.....	10
10:	Card reading, delayed shutdown.....	10
11:	Bluetooth switch settings.....	11
12:	Shut down.....	12
13:	Restore factory settings.....	12
14:	System time setting.....	12
D.	<b>Data Transmission Management.....</b>	<b>12</b>
1	Database management software.....	12
2	Wireless data transmission function.....	14
E.	<b>Matters needing attention.....</b>	<b>15</b>
F.	<b>Packing list.....</b>	<b>16</b>

## A. Overview

This handheld device adopts wireless reading mode, Support FDX-B, FDX-A, EMID, HDX(ISO11784/85) format of electronic tags

The product uses a high-brightness LCD (480x320) display, which can be clearly displayed in indoor or outdoor strong light conditions. The built-in storage function of the product can store up to 20,000 pieces of label information, and the user can read the stored information to a computer or mobile phone through a USB data cable or wireless connection for data management.

The product has stable performance, powerful functions and simple operation. It is suitable for animal management, traceability management, railway inspection and other asset management fields.

PS: Compared with the previous version, this product version has more powerful functions. From the original 5 languages to 13 languages, it is oriented to more countries; the Bluetooth function is newly added, and it supports 2 modes of analog terminal keyboard and serial communication. To make data collection more convenient and faster.

## B. Performance parameters

Working frequency	134.2KHz
Label format	FDX-B、FDX-A 、HDX、EMID (ISO11784/85)
Induction distance	FDX-B: 30mmAnimal ear tag > 20cm FDX-A: 2.12*12Glass tube chip > 5cm HDX: 15mmAnimal ear tag > 15cm EMID: ID card > 10cm
standard	ISO11784/85
Induction time	less than 100ms
Signal indication	480*320 high-brightness LCD, buzzer
Power supply	3.7V lithium battery
Power consumption	0.4W
Storage capacity	20000
Battery life	more than 20000readings when fully charged
Battery capacity	3000mA
Communication interface	USB2.0、Bluetooth 2.0
specifications Length	L:80cm W:8cm H:4cm
weight	500g

## C. Function introduction and operation instructions

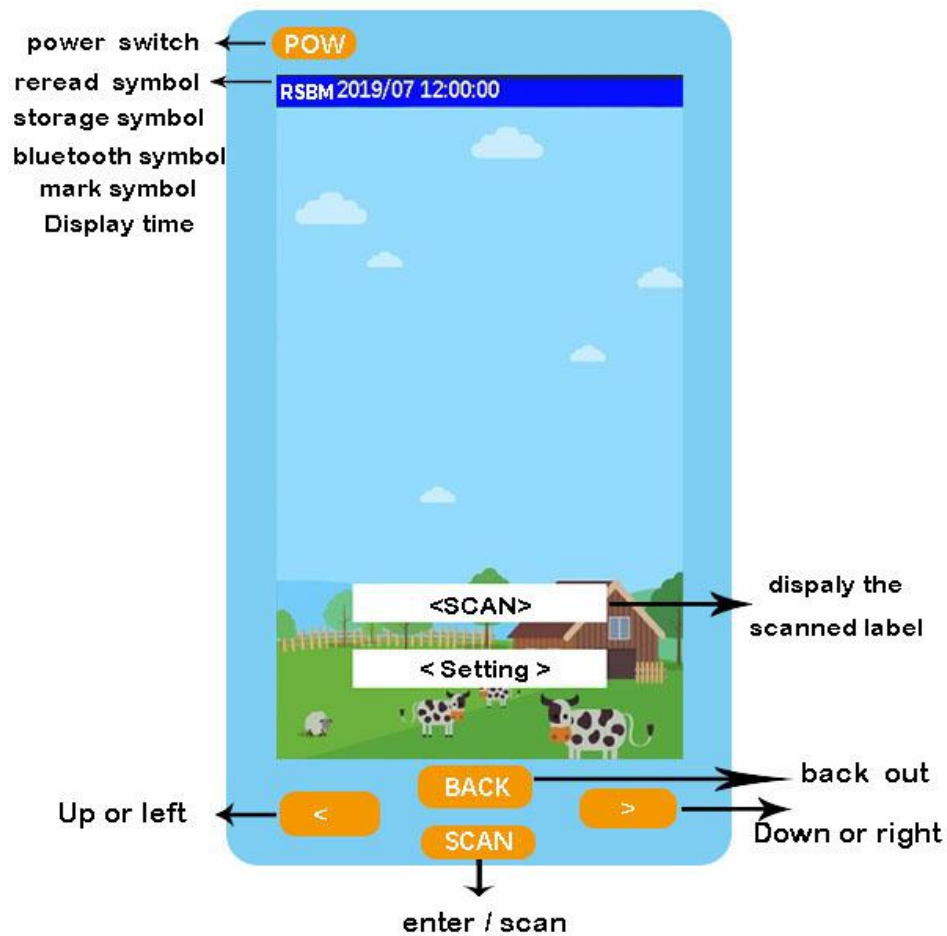
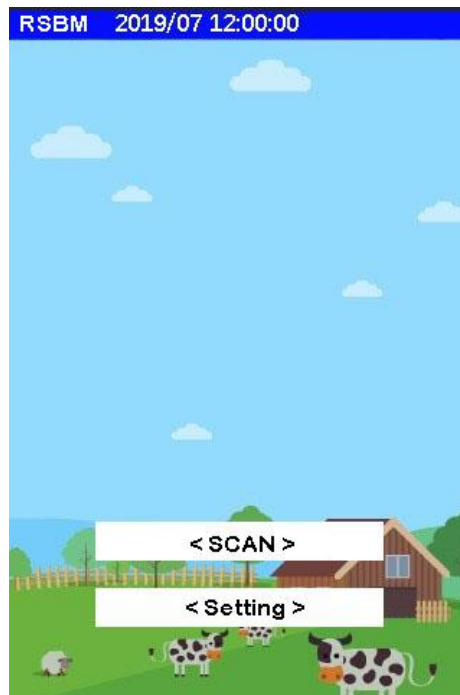


Figure 1 Appearance interface

### 1. Description of the boot display interface

The device comes with a 480\*320 highlighted LCD screen in the upper left corner of the LCD, it can display the reread mode, storage mode, Bluetooth mode, and mark mode at the same time. The time is displayed directly above the LCD, and the current battery level is displayed at the upper right of the LCD.

The interface is shown in Figure 1 (R means reread permission, S means storage permission, B means Bluetooth is turned on, M means mark is turned on)



Boot interface

## 2. Basic operation

### ◆ Power on

In the shutdown state, long press the key, the system starts up and enters the scan label display interface.

### ◆ Scan the label

In the scan label display interface, press the "Scan" button to start scanning the label. After reading the tag information, the buzzer will sound and the current tag information will be displayed on the screen. No tag information can be scanned within 15 seconds, the buzzer will beep once and display "No Tag"

## 3. System settings

When powering on, press the left and right keys, the device enters the setting mode, and press the left and right keys '<' or '>' to move the "arrow" cursor to select different functions for setting.



1: Return to the scanning interface

In the icon interface, press the key "BACK" to return to the scan interface.

2: Language setting

The factory default language of the device is simplified Chinese. If you need to change the language, you need to enter the "Language" icon, press the "SCAN" key to enter the language setting menu and use the "arrow" cursor to select.

(Note: The languages that come with the device are Chinese, English, Russian, French, German, Japanese, Mongolian, Dutch,

Danish, Traditional Chinese, Spanish, Portuguese, and Kazakh to choose from)

### 3: storage settings

Move the cursor to the "storage" icon and press the "SCAN" key to enter the storage setting. At the storage setting menu, press the "SCAN" key to switch between "Y" and "N". (Y means yes, N means no).

(Note: When the storage mode is set to "Y", the device will automatically store the tag type, ID number and operating time after reading the tag information. If the storage mode is set to "N", it will only respond to the tag and not store the information. )

### 4: Reread settings

Move the cursor to the "Reread" icon and press the "SCAN" key to enter the reread setting. At the reread setting menu, press the "SCAN" key to switch between "Y" and "N". (Y means yes, N means no).

(Note: When the reread mode is set to "Y" mode, the handheld will save the same or different label information read into the memory; set to "N" mode, the read label information is the same as the one stored in the memory The current data will not be stored and the buzzer will beep for a long time.)

### 5: Data marking



Move the cursor to the "mark" icon, click the "SCAN" button to enter the data mark setting, and press "<" ">" "SCAN" in the menu to select the mark number.

(Note: This function is a data marking function, you can set 9 groups of different marks, and mark 1-9 kinds of marks for the next stored labels)

#### 6: Data comparison

Move the "arrow" cursor to the "data comparison" menu and press the "SCAN" key to switch between "Y" and "N". After setting the "Y" mode, the device will enable the comparison function, and the read data will be Import the data that needs to be compared with the handset for comparison. If there is the same tag information, the buzzer will beep three times.

#### 7: Buzzer settings

Move the "arrow" cursor to the "buzzer" menu and press the "SCAN" key to switch between "Y" and "N".

(Note: "Y" means that the buzzer is turned on in sound mode, and "N" means that the buzzer is turned off in silent mode.)

#### 8: Delete card reading data

Move the "arrow" cursor to the "Delete Data" menu and press "SCAN" three times to delete all the data in the memory.

(Note: After deleting the data, the data cannot be recovered, please operate with caution.)

9: version number

Move the "arrow" cursor to the "version number" menu and press the "SCAN" key to query the current version information of the device.

10: Card reading, delayed shutdown

Move the "arrow" cursor to the "Read Card Selection" and "Delay Setting" menus, and cooperate with the "<" ">" keys, and press the "SCAN" key to switch between "Y" and "N";

(Note: "Y" is the current selection, you can set single card reading or multiple card reading, single card reading needs to press the "SCAN" button to continue scanning every time the label is scanned, continuous card reading means continuous automatic reading Card, press "<" or ">" when the label is scanned to exit)

In the power-on state, without any key operation or data transmission within 2 minutes, the system will automatically shut down and enter the dormant state. (You can set the automatic shutdown time)

Read Model		bluetooth	
>1.Single card reading	(Y)	>1.Enable	(Y)
2.Continuous card reading	(N)	2.Disable	(N)
		<b>bluetooth mode</b>	
		1.Analog keyboard(HID)	(Y)
		2.Serial Bluetooth(SPP)	(N)
5. 2minutes shutdown	(Y)		
6. 3minutes shutdown	(N)		
7. 5minutes shutdown	(N)		
8.10minutes shutdown	(N)		
9.20 minutes shutdown	(N)		

### 11: Bluetooth switch settings

Move the "arrow" cursor to the "Bluetooth" menu, press the "SCAN" key to switch between "Y" and "N", set it to "Y" mode, turn on the Bluetooth function of the handheld, and set it to "N" mode , The Bluetooth function of the handheld is turned off.

It can be switched between HID analog keyboard and serial communication SPP mode:

In HID mode, the device name scanned by terminal devices such as mobile phones is "HID-A02".

In SPP mode, the device name scanned by terminal devices such as mobile phones is "SPP-A02".

(Note: When switching modes, turn off the Bluetooth first, then switch, and then turn on the Bluetooth, otherwise there may be a problem of not being able to search for the device. After the connection is successful, the information read by the handheld will

be sent through Bluetooth each time. The tag ID number is given to the relevant Bluetooth device.)

#### 12: Shut down

Move the "arrow" cursor to the "Shutdown" menu and press "SCAN" to turn off the handheld.

#### 13: Restore factory settings

Move the "arrow" cursor to the "restore factory settings" menu, press the "SCAN" key, the handheld will restore all factory settings.

(Note: This function is convenient for customers to enable when the setting is "fuzzy", and restore the factory settings of the device after enabling.)

#### 14: System time setting

The system time of the handheld can be set by one key of the computer. For the operation method, please refer to the section "Data Transmission Management".

## D. Data Transmission Management

### 1 Database management software

The handheld has its own USB2.0 interface. After connecting the reader to the computer with a USB cable, the database management software can be used to query the amount of stored information, copy the data, delete the data, and set the system time.

Database management software as shown

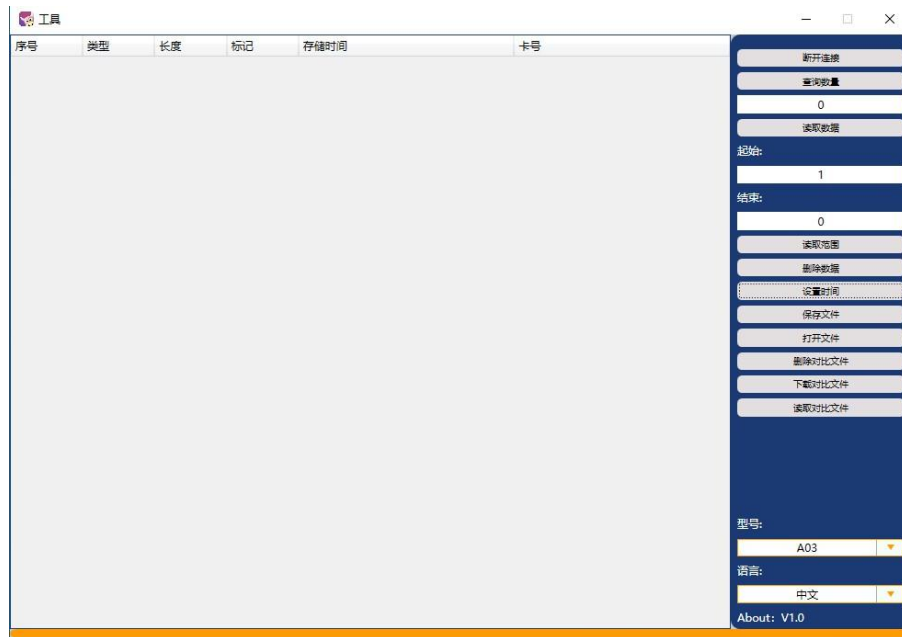


Figure 1 Database management software interface

Connect the reader to the computer with a USB cable, then open the database management software, click "Connect Device" and hear a beep and pop up a successful connection prompt, you can proceed to the next step (the driver needs to be installed for the first use). The key functions are described as follows:

"Disconnect": Disconnect: Disconnect the software from the device.

"Query Quantity": Display the number of tags currently stored in the handheld.

"Read data": Read all the information stored in the reader.

"Read range": Set the start position and end position. After clicking the read range, only the data whose serial number is the corresponding start bit and receive bit will be displayed.

"Delete data": Clear all tag information stored in the handheld (note: the information cannot be restored after clearing).

"Set time": The synchronization of the handheld is the same as the current computer time.

"Save file": Save the exported data to an Excel spreadsheet.

"Open file": Display the data of the Excel file in the tool.

"Open comparison file": Open the comparison file on the computer.

"Delete comparison file": Delete the comparison file in the device.

"Download comparison file": Download the comparison file to the device.

"Read comparison file": Read the comparison file in the device.

## 2 Wireless data transmission function

When the scanner is equipped with a Bluetooth module, smart devices such as computers and mobile phones can be connected to the handheld through the Bluetooth interface to establish a communication link.

When using the Bluetooth function, turn on the wireless transmission function in the setting mode of the handheld, and use the upper computer to search for and add Bluetooth devices. In the HID simulation keyboard mode, the Bluetooth device name of the handheld is "HID-A02"; in the SPP simulation keyboard mode, the Bluetooth device name of the handheld is "SPP-A02". Select and click automatic connection. After the device is successfully connected, the label card number read by the card reader will be automatically printed and displayed at the cursor of the corresponding terminal device.

## E. Matters needing attention

1. This product is an electronic product and is transported and stored in accordance with conventional electrical equipment.
2. Avoid dropping or impacting the reader from a high place.
3. Do not place the reader in a high temperature, humid or corrosive environment.
4. Non-professionals do not open the reader shell.
5. Please use the provided data cable for online operation.
6. Try not to remove the battery back cover frequently.
7. Please remove the battery when not in use for a long time to avoid battery leakage and corrosion of the circuit board

## F. Packing list

Serial number	Name
1	Stick Bluetooth handheld device
2	USB data cable
3	Certificate of approval
4	《Instruction for Bluetooth Stick Handheld Device》